

EU-4306

Quick Installation Guide

03-2013 / v1.0

Contents

I. Package Contents	3
II. System Requirements	3
III. Installation	3
IV. Linux	5
IV-1. Requirements	5
IV-2. File Description	5
IV-3. Conditional Completion Flags	5
IV-3-1. <i>Getting Started</i>	5
IV-3-2. <i>Usage</i>	6
IV-3-3. <i>Driver Parameters</i>	6
V. Mac OS	7
V-1. Driver Installation	7
V-2. Driver Uninstallation.....	9
V-3. Troubleshooting – OS X 10.8 Installation Issue.....	10
VI. Windows	12

I. Package Contents



USB 3.0 Gigabit Ethernet Adapter



QIG



CD-ROM

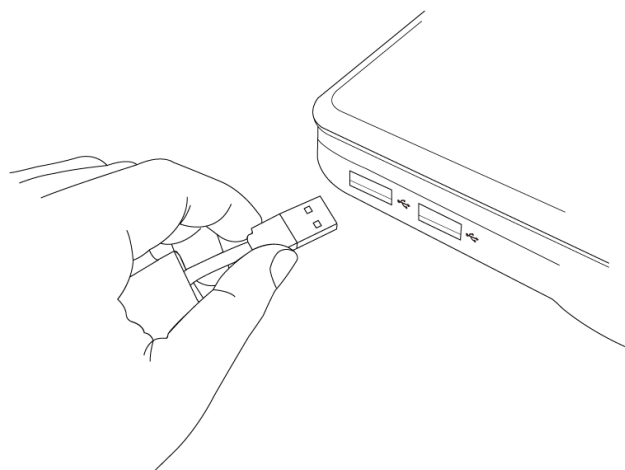
II. System Requirements

- Windows 98 SE, Windows 2000, Windows ME, Windows XP, Windows 7, Windows 8, Mac OS X
- Internet Explorer V 5.0 or above, Netscape V 4.0 or above, Firefox 1.5 or above.

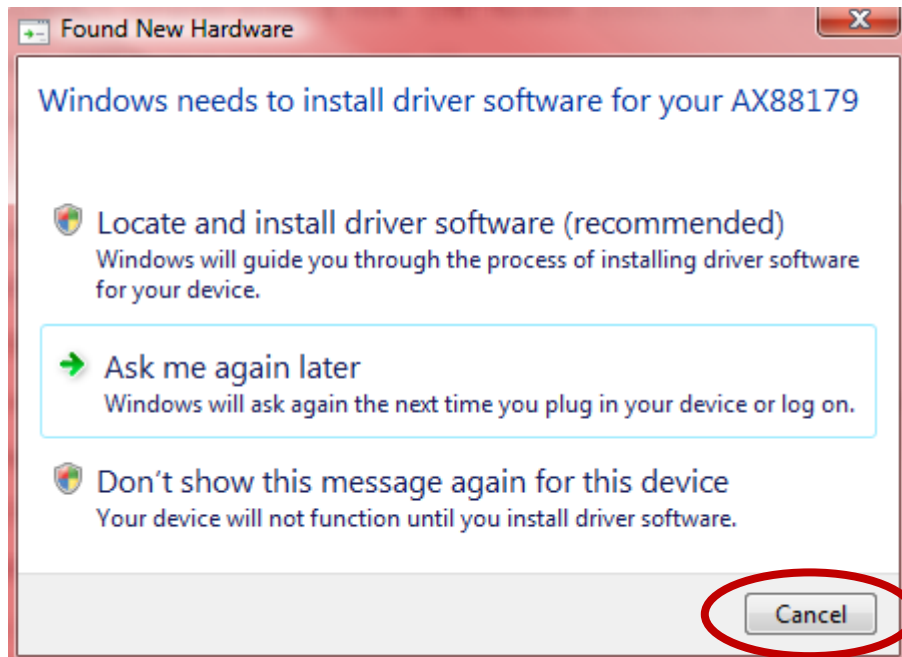
III. Installation

- 1.** Switch on your computer and insert the Ethernet adapter into an available USB port of your computer.

Note: *The EU-4306 is compatible with USB 2.0 & 3.0 ports - for best performance please use a USB 3.0 port.*



- 2.** If a Hardware Wizard/Driver Installation window opens as shown to the left, please click “Cancel” or “Close”.

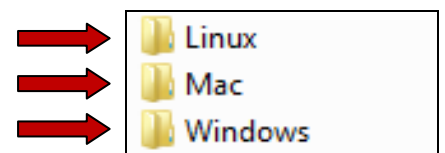


3. Insert the included CD-ROM into the CD drive of your computer. Browse to the contents of the CD-ROM and open the "Drivers" folder.

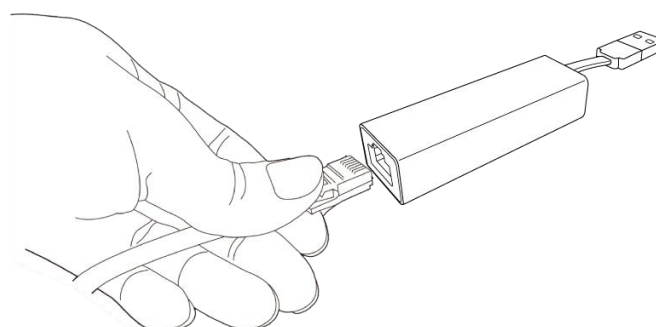


4. Open the correct folder for your operating system and then follow the instructions in the appropriate chapter to install the necessary drivers.

- IV. *Linux*
- V. *Mac OS*
- VI. *Windows*



5. **After the drivers are installed**, carefully insert your Ethernet cable into the Gigabit Ethernet adapter.



IV. Linux

IV-1. Requirements

In order to build the driver, Linux kernel sources must be installed on the build machine. The running kernel version must match the installed kernel sources; kernel sources can be obtained from www.kernel.org or your Linux distributor.

Note: Ensure that the kernel is built with *Host-side, EHCI, OHCI or UHCI support*.

IV-2. File Description

File	Description
ax88179_178a.c	AX88179_178A Main Linux driver
axix.h	AX88179_178A Linux driver header
Makefile	AX88179_178A driver make

IV-3. Conditional Completion Flags

IV-3-1. Getting Started

1. Extract the compressed driver source file to your template directory by the following command:

```
[root@localhost template]# tar -xf DRIVER_SOURCE_PACKAGE.tar.bz2
```

2. The driver source files should be extracted to the current directory. Execute the following command to compile the driver:

```
[root@localhost template]# make
```

3. If the compilation is successful, *ax88179_178a.ko* will be created under the current directory.

4. If you wish to use *modprobe* to mount the driver, execute the following command to install the driver:

```
[root@localhost template]# make install
```

IV-3-2. Usage

1. To load the driver manually, go to the driver directory and execute the following commands:

```
[root@localhost template]# modprobe usbnet
```

```
[root@localhost template]# insmod ax88179_178a.ko
```

2. To unload the driver, execute the following command:

```
[root@localhost anywhere]# rmmod axax88179_178a
```

IV-3-3. Driver Parameters

The following parameters can be set when using insmod:

```
Msg_enable=0xNNNNNNNN
```

Specifies the msg_enable of usbnet.

Example:

```
Insmod ax88179_178.ko msg_enable=0x00000000  
bszie=xx
```

Specifies the Rx Bulk In Queue size (KB)

If bszie value is between 1 and 5, the bszie value is fixed at 5KB.

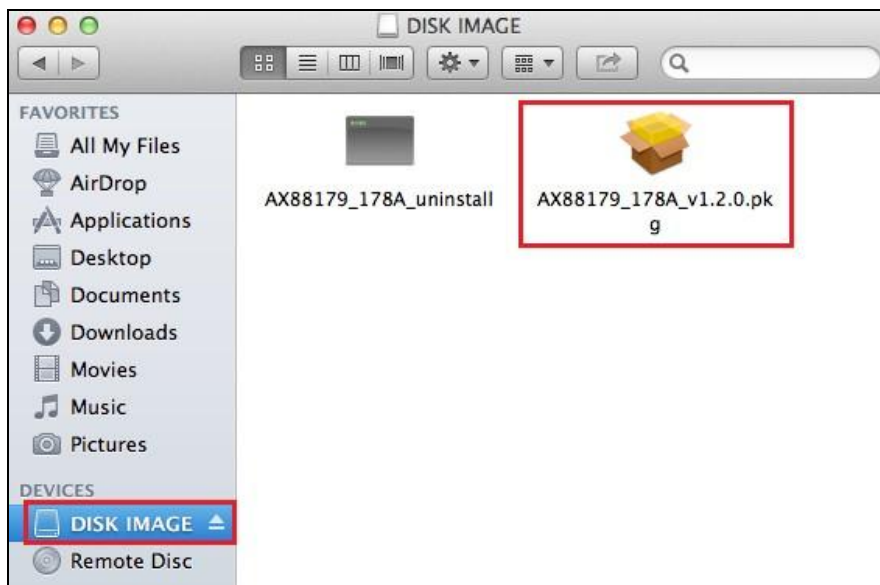
If bszie value is over 24, the bszie value is fixed at 24KB.

If bszie value equals zero, the Bulk In Queue function is disabled.

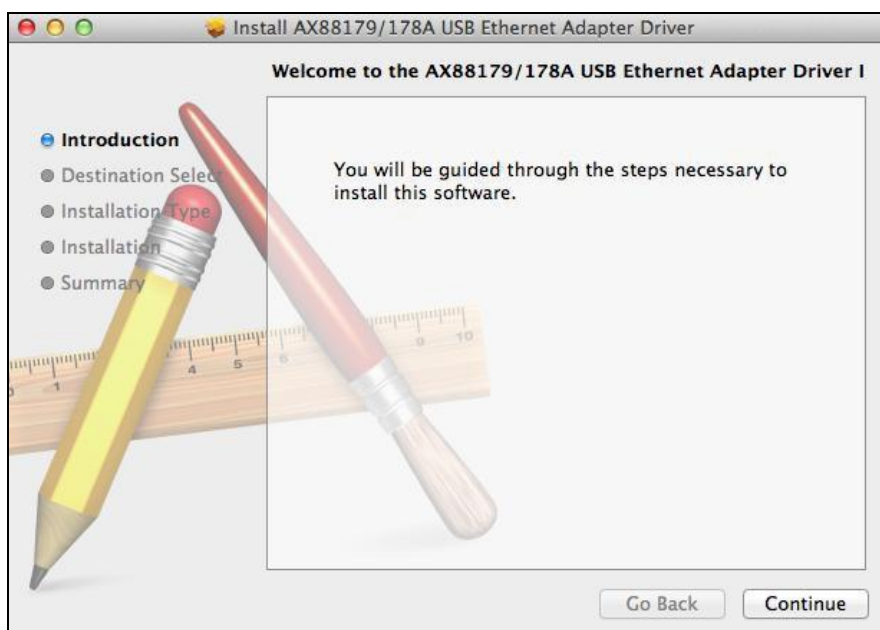
V. Mac OS

V-1. Driver Installation

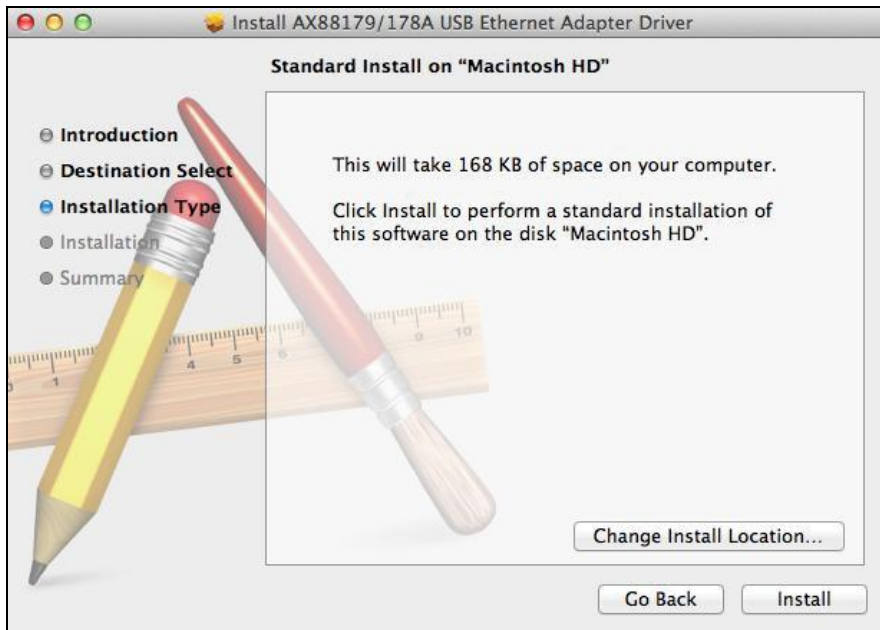
1. Open the folder named “AX88179_178A_...” and double click the “AX88179_178A.dmg” file. Navigate to the disk image mounted to your Mac as shown in the following screen:



2. Double click the .pkg file to open the driver installation wizard. Click “Continue” and follow the on-screen instructions.



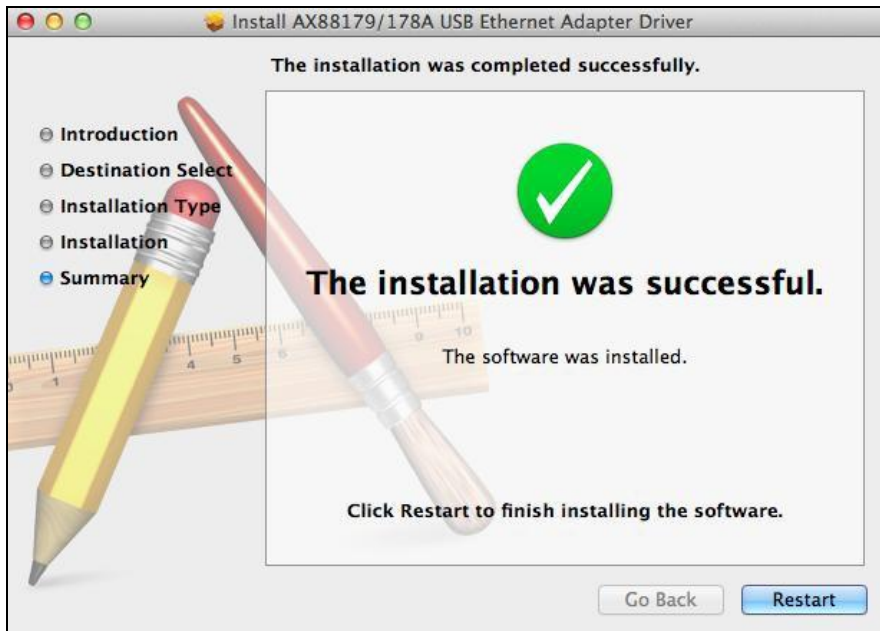
3. Click “install” to continue the installation operation. You may be prompted for your username and password.



4. You will be prompted that your computer must restart after the installation is complete. Click “Continue Installation” to proceed.

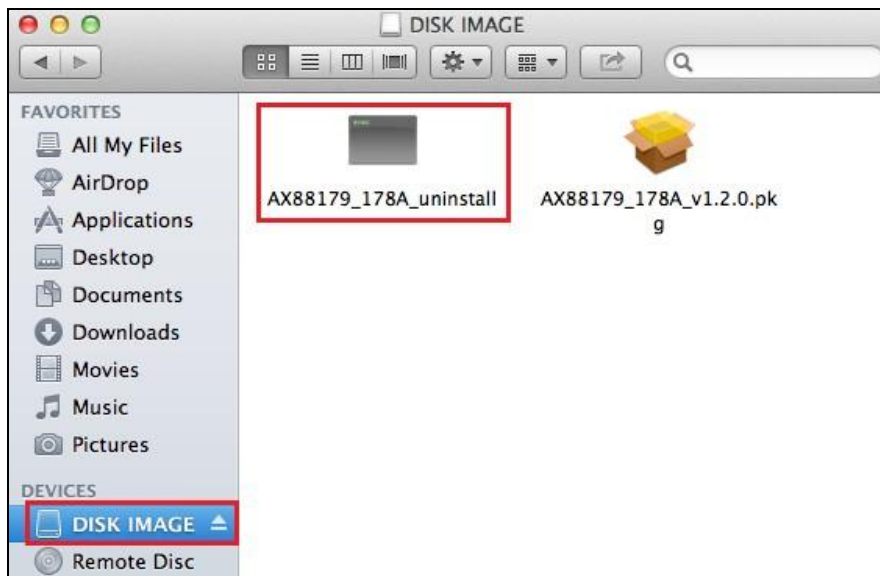


5. When the installation is complete, as shown below, click “Restart” to restart your system.



V-2. Driver Uninstallation

1. Open the folder named “AX88179_178A...” and double click the “AX88179_178A.dmg” file. Navigate to the disk image mounted to your Mac as shown in the following screen:



2. Double click the “AX88179_178A_uninstall” file to uninstall the driver. The screen below will confirm the uninstall was successful:

```
allan — AX88179_178A_uninstall — 86x9
Last login: Mon Sep 10 16:35:42 on ttys000
Tsengteki-MacBook-Air:~ allan$ /Volumes/DISK\ IMAGE/AX88179_178A_uninstall ; exit;
Password:
logout
[Process completed]
```

V-3. Troubleshooting – OS X 10.8 Installation Issue

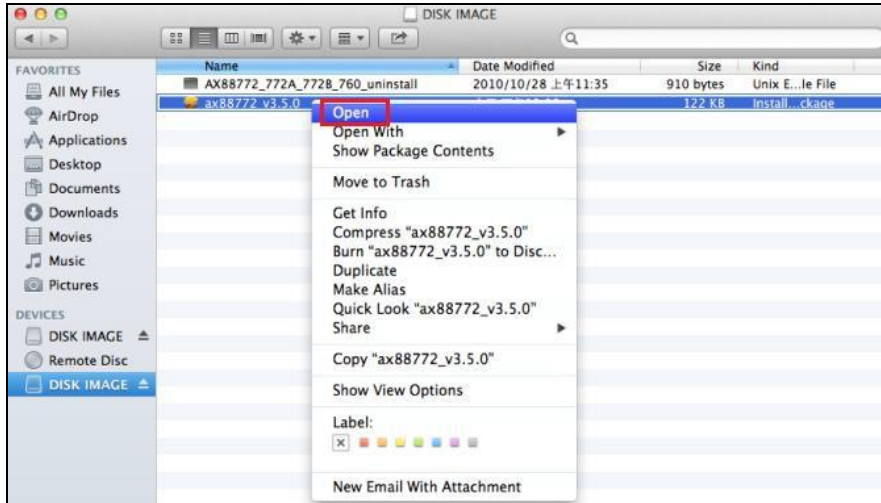
For Mac OS X 10.8 users, new security features in the OX X 10.8 system may initially prevent you from installing the drivers. By default, the OS X 10.8 system prevents users from installing or launching applications which are not downloaded from the Mac App Store, or which have not been digitally signed by the developers.

Depending on your driver version, your drivers may not yet have been digitally signed. If this is the case, you will see the error message below when you open the installer:



To override this function, and continue with driver installation, please follow the instructions below:

1. Control-click (hold down the control button on your keyboard and then click) the .pkg file and select "Open" from the menu, as shown below:



2. You will be prompted that the installer is from an unidentified developer and asked to confirm if you wish to open it. Please click “Open” to continue.



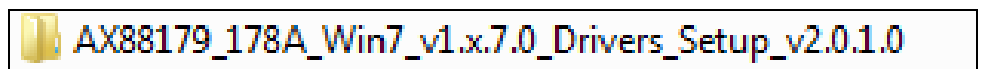
3. The installer will open and function normally as described in **V-1. Driver Installation.**

VI. Windows

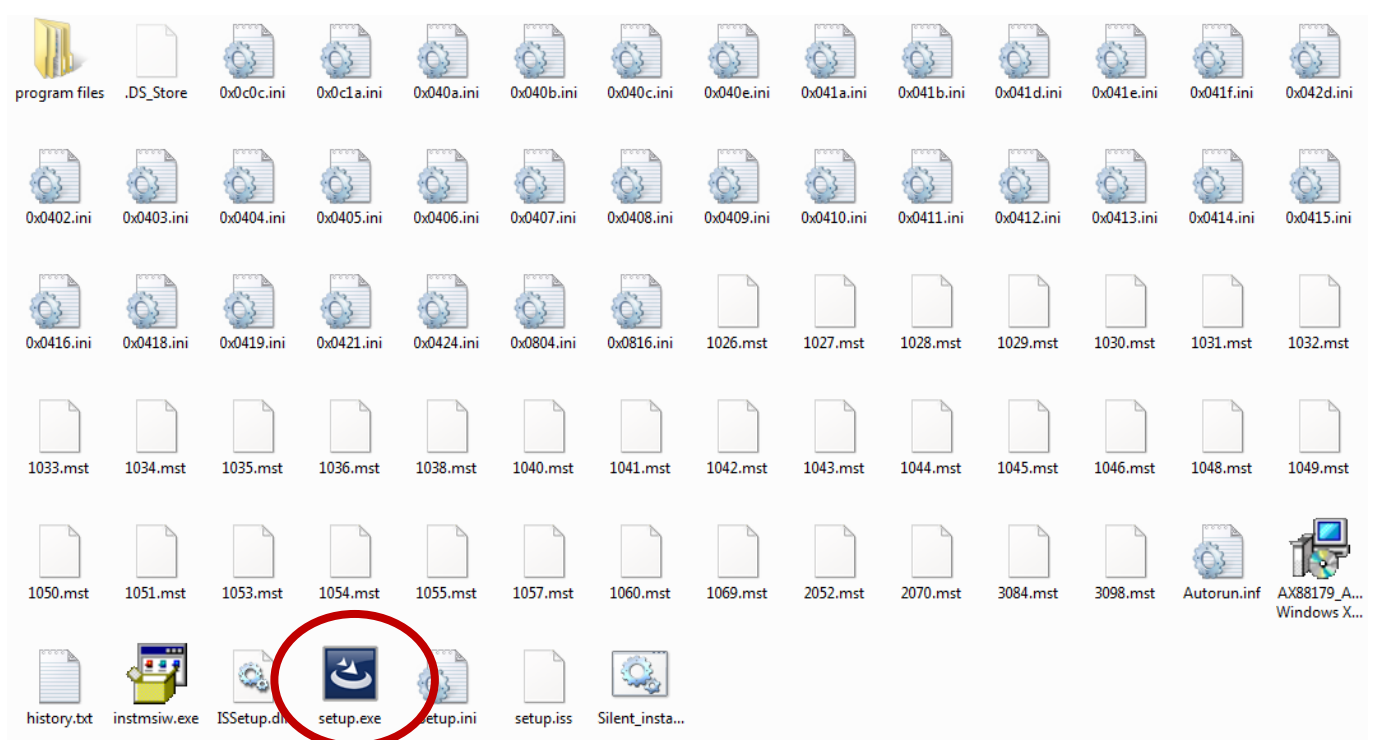
1. Open the correct folder for your version of Windows.



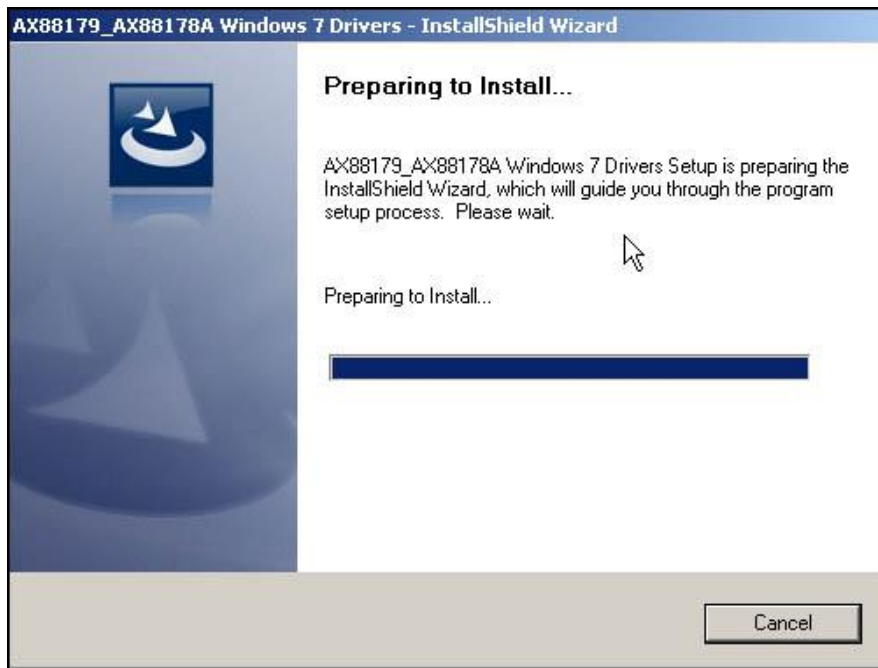
2. On the following screen, open the folder named "AX88179_178A_..."



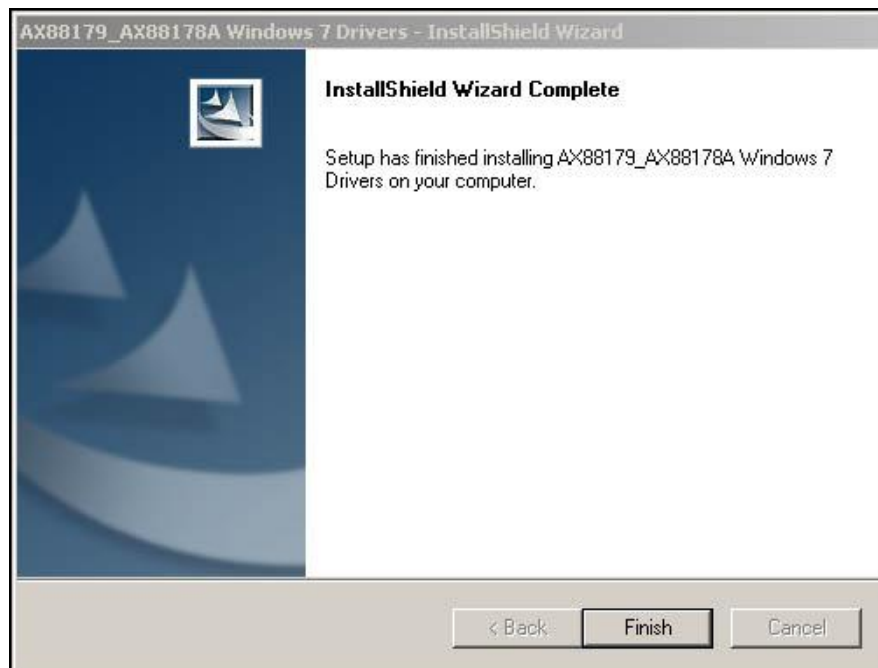
3. Locate and double click the "Setup.exe" icon to start the driver installation wizard.



4. Please wait while the setup wizard prepares to install the drivers.



5. When the installation is complete, click "Finish".





COPYRIGHT

Copyright © Edimax Technology Co., Ltd. all rights reserved. No part of this publication may be reproduced, transmitted, transcribed, stored in a retrieval system, or translated into any language or computer language, in any form or by any means, electronic, mechanical, magnetic, optical, chemical, manual or otherwise, without the prior written permission from Edimax Technology Co., Ltd.

Edimax Technology Co., Ltd. makes no representations or warranties, either expressed or implied, with respect to the contents hereof and specifically disclaims any warranties, merchantability, or fitness for any particular purpose. Any software described in this manual is sold or licensed as is. Should the programs prove defective following their purchase, the buyer (and not this company, its distributor, or its dealer) assumes the entire cost of all necessary servicing, repair, and any incidental or consequential damages resulting from any defect in the software. Edimax Technology Co., Ltd. reserves the right to revise this publication and to make changes from time to time in the contents hereof without the obligation to notify any person of such revision or changes.

The product you have purchased and the setup screen may appear slightly different from those shown in this QIG. The software and specifications are subject to change without notice. Please visit our website www.edimax.com for updates. All brand and product names mentioned in this manual are trademarks and/or registered trademarks of their respective holders.

Edimax Technology Co., Ltd.

Add: No. 3, Wu-Chuan 3rd Rd., Wu-Ku Industrial Park, New Taipei City, Taiwan

Tel: +886-2-77396888

Email: sales@edimax.com.tw

Federal Communication Commission Interference Statement

This equipment has been tested and found to comply with the limits for a Class B digital device, pursuant to Part 15 of FCC Rules. These limits are designed to provide reasonable protection against harmful interference in a residential installation. This equipment generates, uses, and can radiate radio frequency energy and, if not installed and used in accordance with the instructions, may cause harmful interference to radio communications. However, there is no guarantee that interference will not occur in a particular installation. If this equipment does cause harmful interference to radio or television reception, which can be determined by turning the equipment off and on, the user is encouraged to try to correct the interference by one or more of the following measures:

1. Reorient or relocate the receiving antenna.
2. Increase the separation between the equipment and receiver.
3. Connect the equipment into an outlet on a circuit different from that to which the receiver is connected.
4. Consult the dealer or an experienced radio technician for help.

FCC Caution

This device and its antenna must not be co-located or operating in conjunction with any other antenna or transmitter. This device complies with Part 15 of the FCC Rules. Operation is subject to the following two conditions: (1) this device may not cause harmful interference, and (2) this device must accept any interference received, including interference that may cause undesired operation. Any changes or modifications not expressly approved by the party responsible for compliance could void the authority to operate equipment.

Federal Communications Commission (FCC) Radiation Exposure Statement

This equipment complies with FCC radiation exposure set forth for an uncontrolled environment. In order to avoid the possibility of exceeding the FCC radio frequency exposure limits, human proximity to the antenna shall not be less than 2.5cm (1 inch) during normal operation.

Federal Communications Commission (FCC) RF Exposure Requirements

This EUT is compliance with SAR for general population/uncontrolled exposure limits in ANSI/IEEE C95.1-1999 and had been tested in accordance with the measurement methods and procedures specified in OET Bulletin 65 Supplement C. The equipment version marketed in US is restricted to usage of the channels 1-11 only. This equipment is restricted to *indoor* use when operated in the 5.15 to 5.25 GHz frequency range.

R&TTE Compliance Statement

This equipment complies with all the requirements of DIRECTIVE 1999/5/EC OF THE EUROPEAN PARLIAMENT AND THE COUNCIL of March 9, 1999 on radio equipment and telecommunication terminal equipment and the mutual recognition of their conformity (R&TTE). The R&TTE Directive repeals and replaces in the directive 98/13/EEC (Telecommunications Terminal Equipment and Satellite Earth Station Equipment) As of April 8, 2000.

Safety

This equipment is designed with the utmost care for the safety of those who install and use it. However, special attention must be paid to the dangers of electric shock and static electricity when working with electrical equipment. All guidelines of this and of the computer manufacture must therefore be allowed at all times to ensure the safe use of the equipment.

EU Countries Intended for Use

The ETSI version of this device is intended for home and office use in Austria, Belgium, Bulgaria, Cyprus, Czech, Denmark, Estonia, Finland, France, Germany, Greece, Hungary, Ireland, Italy, Latvia, Lithuania, Luxembourg, Malta, Netherlands, Poland, Portugal, Romania, Slovakia, Slovenia, Spain, Sweden, Turkey, and United Kingdom. The ETSI version of this device is also authorized for use in EFTA member states: Iceland, Liechtenstein, Norway, and Switzerland.

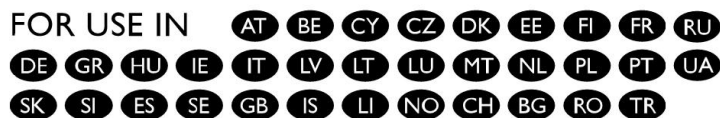
EU Countries Not Intended for Use

None

EU Declaration of Conformity

English:	This equipment is in compliance with the essential requirements and other relevant provisions of Directive 1999/5/EC, 2009/125/EC.
Français:	Cet équipement est conforme aux exigences essentielles et autres dispositions de la directive 1999/5/CE, 2009/125/CE
Čeština:	Toto zařízení je v souladu se základními požadavky a ostatními příslušnými ustanoveními směrnic 1999/5/ES, 2009/125/ES.
Polski:	Urządzenie jest zgodne z ogólnymi wymaganiami oraz szczególnymi warunkami określonymi Dyrektywą UE 1999/5/EC, 2009/125/EC
Română:	Acest echipament este în conformitate cu cerințele esențiale și alte prevederi relevante ale Directivei 1999/5/CE, 2009/125/CE.
Русский:	Это оборудование соответствует основным требованиям и положениям Директивы 1999/5/EC, 2009/125/EC.
Magyar:	Ez a berendezés megfelel az alapvető követelményeknek és más vonatkozó irányelveknek (1999/5/EK, 2009/125/EC)
Türkçe:	Bu cihaz 1999/5/EC, 2009/125/EC direktifleri zorunlu istekler ve diğer hükümlerle ile uyumludur.
Українська:	Обладнання відповідає вимогам і умовам директиви 1999/5/EC, 2009/125/EC.
Slovenčina:	Toto zariadenie spĺňa základné požiadavky a ďalšie príslušné ustanovenia smerníc 1999/5/ES, 2009/125/ES.
Deutsch:	Dieses Gerät erfüllt die Voraussetzungen gemäß den Richtlinien 1999/5/EC, 2009/125/EC.
Español:	El presente equipo cumple los requisitos esenciales de la Directiva 1999/5/EC, 2009/125/EC.
Italiano:	Questo apparecchio è conforme ai requisiti essenziali e alle altre disposizioni applicabili della Direttiva 1999/5/CE, 2009/125/CE.
Nederlands:	Dit apparaat voldoet aan de essentiële eisen en andere van toepassing zijnde bepalingen van richtlijn 1999/5/EC, 2009/125/EC.
Português:	Este equipamento cumpre os requisitos essenciais da Directiva 1999/5/EC, 2009/125/EC
Norsk:	Denne utstyret er i samsvar med de viktigste kravene og andre relevante regler i Direktiv 1999/5/EC, 2009/125/EC.
Svenska:	Denna utrustning är i överensstämmelse med de väsentliga kraven och övriga relevanta bestämmelser i direktiv 1999/5/EG, 2009/125/EG.
Dansk:	Denne udstyr er i overensstemmelse med de væsentligste krav og andre relevante forordninger i direktiv 1999/5/EC, 2009/125/EC.
Suomi:	Tämä laite täyttää direktiivien 1999/5/EY, 2009/125/EY oleelliset vaatimukset ja muut asiaankuuluvat määräykset.

FOR USE IN



WEEE Directive & Product Disposal



At the end of its serviceable life, this product should not be treated as household or general waste. It should be handed over to the applicable collection point for the recycling of electrical and electronic equipment, or returned to the supplier for disposal.

Multi-Language Quick Installation Guide(QIG) on the CD

Čeština: Českého průvodce rychlou instalací naleznete na přiloženém CD s ovladači

Deutsch: Finden Sie bitte das deutsche S.A.L. beiliegend in der Treiber CD

Español: Incluido en el CD el G.R.I. en Español.

Français: Veuillez trouver l'français G.I.R ci-joint dans le CD

Italiano: Incluso nel CD il Q.I.G. in Italiano.

Magyar: A magyar telepítési útmutató megtalálható a mellékelt CD-n

Nederlands: De nederlandse Q.I.G. treft u aan op de bijgesloten CD

Polski: Skrócona instrukcja instalacji w języku polskim znajduje się na załączonej płycie CD

Português: Incluído no CD o G.I.R. em Portugues

Русский: Найдите Q.I.G. на русском языке на приложенном CD

Türkçe: Ürün ile beraber gelen CD içinde Türkçe Hızlı Kurulum Kılavuzu'nu bulabilirsiniz

Українська: Для швидкого налаштування Вашого пристрою, будь ласка, ознайомтесь з інструкцією на CD

Declaration of Conformity

We, Edimax Technology Co., Ltd., declare under our sole responsibility, that the equipment described below complies with the requirements of the European Council directive (2004/108/EC).

Equipment: USB 3.0 Gigabit Ethernet Adapter
Model No.: EU-4306

The following European standards for essential requirements have been followed:

EMC: EN 55022: 2010 (Class B)

EN 55024: 2010

IEC 61000-4-2: 2008; IEC 61000-4-3: 2006/ A1: 2007/ A2: 2010;

IEC 61000-4-4: 2004/ A1: 2010; IEC 61000-4-5: 2005;

IEC 61000-4-6: 2008;

Safety (LVD): EN 60950-1: 2006 +A12: 2011

Edimax Technology Co., Ltd.
No. 3, Wu Chuan 3rd Road,
Wu-Ku Industrial Park,
New Taipei City, Taiwan



Date of Signature: March, 2013

Signature: _____

A handwritten signature in black ink, appearing to read 'Albert Chang', written over a horizontal line.

Printed Name: _____

Albert Chang

Title: _____

Director

Edimax Technology Co., Ltd.



ΣDIMAX
NETWORKING PEOPLE TOGETHER

Edimax Technology Co., Ltd.

No.3, Wu-Chuan 3rd Road, Wu-Gu,
New Taipei City 24891, Taiwan

Edimax Technology Europe B.V.

Nijverheidsweg 25 5683 CJ Best
The Netherlands

Edimax Computer Company

3350 Scott Blvd., Bldg.15 Santa Clara,
CA 95054, USA