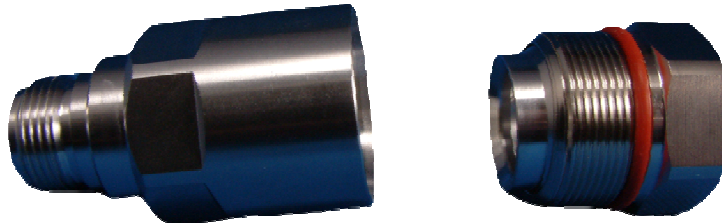


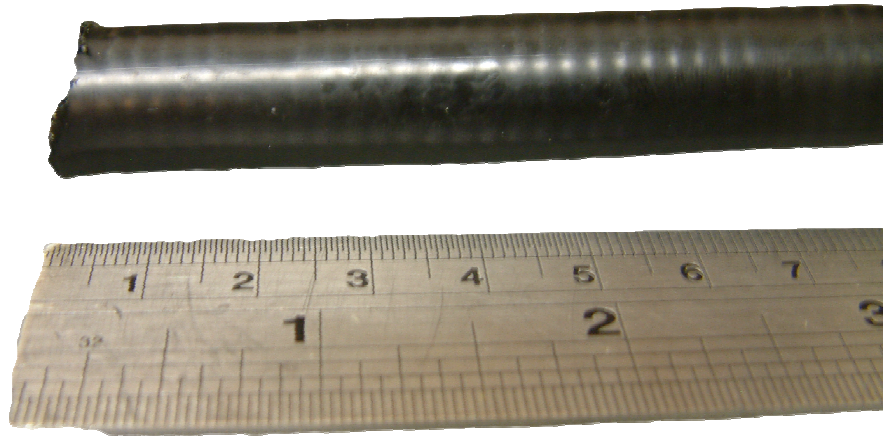
**Fitting the RMC50 N type Sockets to the 16mm RMC
Leaky Feeder cable**



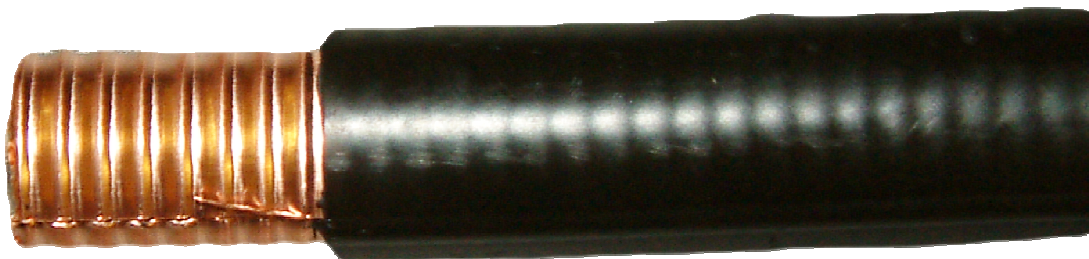
Above shows the two parts supplied with the socket.
(left-to-right) Front body part, back body part

To fit the connector to the RMC Leaky Feeder cable you will need a Stanley Knife, Two 23mm Spanners, Small Flat Head Screwdriver, a tape measure and a Hacksaw

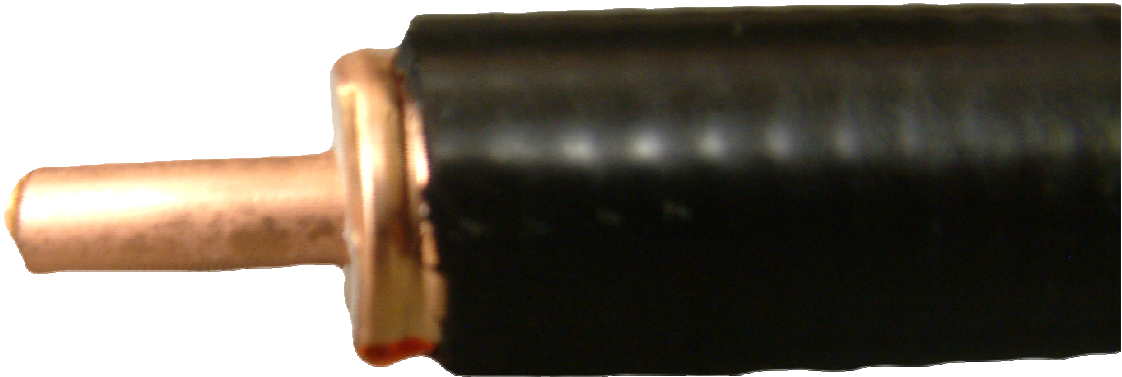
Fitting the connector



Cut the end of the cable square and clean using a hacksaw, remove all burs and copper dust from the cutting and measure 13mm from the end.



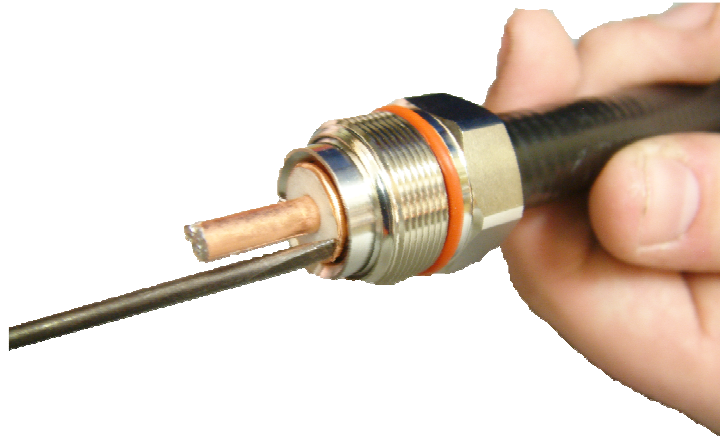
Strip the outer black jacket (13mm) using a Stanley knife.



Carefully cut 9mm from the end leaving the solid core centre intact. This is done by using a Stanley knife to cut straight through the copper outer and the white ptfe insulator down to the solid core.



Push the back part of the connector onto the cable, it should pass over the black jacket and leave the remaining copper jacket just poking out.



Now use the small flat head screwdriver to flair the copper outer as shown.

Solwise



Now screw the front part of the connector onto the back part until hand tight, then tighten the back part of the connector using the two 23mm spanners until it is not possible to tighten anymore