

H8860 5G CPE



Overview

Hongdian H8860 is a 5G CPE specially designed for small and medium-sized enterprises and smart homes. It has simple application, beautiful appearance and powerful performance. It has complete 5G functions, such as Gigabit UL and DL bandwidth, and Gigabit Ethernet. The family provides high-speed WiFi access and 5G Internet access.

OS

HongdianOS

5G

5G Network



Wi-Fi

Features

5G/4G

- NR Sub-6
- SA mode & NSA mode

WiFi

- 2.4GHz 802.11b/g/n/ac
- 5GHz 802.11b/g/n/ac



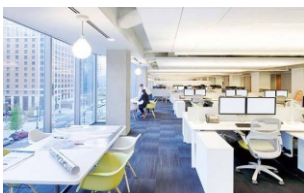
Powerful CPU

- Qualcomm IPQ4019
- 4x ARM Cortex A7, Quad-core CPU

Fashion Design

- Desinged for SME and Smart Home
- 4*100/1000Mbps Ethernet

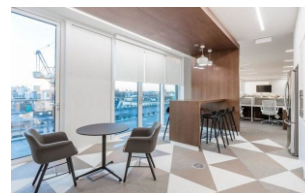
Application



Share network



Smart home



Plug and play



Secure surveillance

Specification

| Spec | Instruction | Remark |
|------------------------------|--|--|
| Model | H8860 | |
| Network | Global | 5G NR n1/n41/77/78/79 LTE-FDD B1/B2/B3/B4/B5/B7/B8/B9/B12/B13/B14/B17/B18/B19/B20/B25/B26/B28/B29/B30/B32/B66/B71 LTE-TDD B34/B38/39/B40/B41/B42/B48 |
| | Data:(theoretical value) | 5G SA DL 2.1Gbps; UL 900Mbps 5G NSA DL 2.5Gbps; UL 650Mbps LTE DL 1.0Gbps; UL 200Mbps 2.4GHz 802.11b/g/n/ac, 2*2MIMO, 400Mbps 5GHz 802.11b/g/n/ac, 2*2 MIMO, 866Mbps |
| Front panel connector | 1* Reset button 8* Antenna connectors(SMA-K, 6-8 SMA according to configuration) 1* WAN/LAN interface (10/100/1000 Mbps adaptive) 3* LAN interfaces (10/100/1000 Mbps adaptive) | |
| left panel connector | 2* SIM card slots (1.8 V/ 3.3 V) 1* TF card holder 1* 2-pin power supply terminal 1* DC power supply terminal 1* ground stud | |
| Power supply | Operating Voltage | +9V~+48V DC |
| Others | Size | 180x125x48(mm) |
| | Weight | About 700g |
| | Operating temperature | -30~+75°C |
| | Storage temperature | -40~85°C |
| | Relative humidity | ≤95%(no condensing) |

Appearance Dimension

